




Globally addressing the COVID-19 crisis

Philips Access to Care commitment

Hans Hofstraat, VP CTO

April 29, 2020

innovation  you

We have committed to improving Access to Care to 400m lives in underserved countries by 2030



At Philips, we are working to expand access to care for all, right across the health continuum.

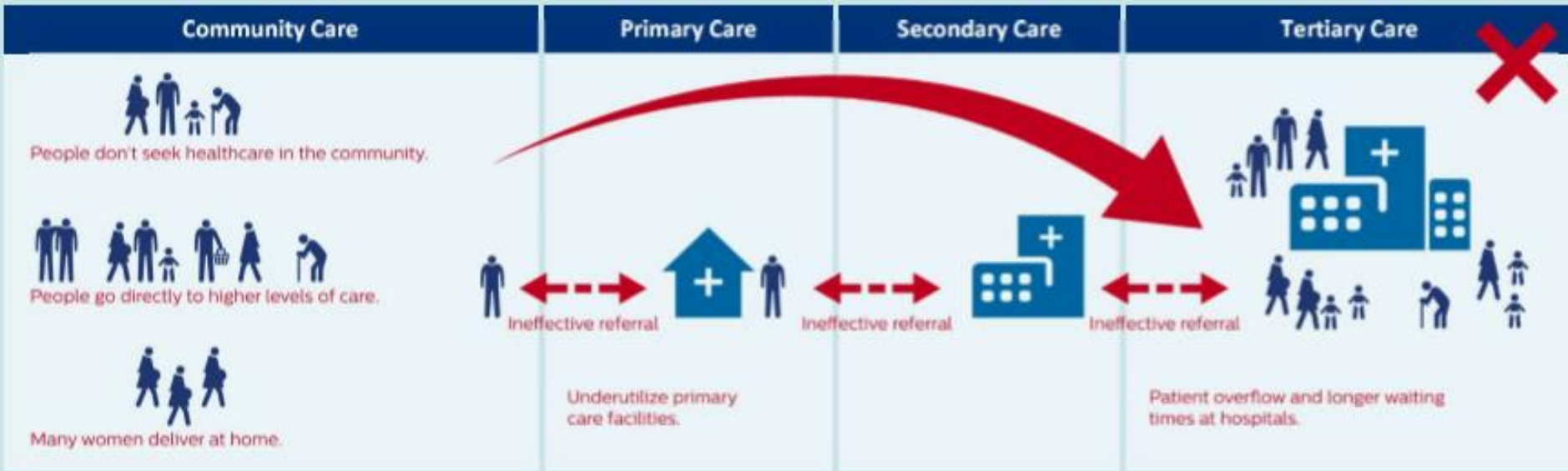
- In support of achieving UHC by 2030, we have **committed to the UN Sustainable Development Goals 3** (Ensure healthy lives and promote well-being for all at all ages) **and 17** (Revitalize the global partnership for sustainable development).
- We are committed to enabling **financially sustainable care** by helping to drive value-based healthcare, as well as expanding **access to care** for the underserved, e.g. by means of digital connected innovations that are locally relevant and the further roll-out of our Community Life Centers.
- Our goal is to improve the lives of 3 billion people a year by 2030. Within this goal, **we have committed to improving access to care in underserved communities for 400 million people a year by 2030.**



We **strongly believe** that through the use of technology and responsible leadership, we can help increase **access to quality healthcare** and improve health outcomes for all."

Frans van Houten
CEO
Royal Philips

The true nature of the challenge – also for COVID-19



Limited access to clinics, medical equipments, drugs and trained healthcare professionals.



Triple disease burden and poor health outcomes, especially in mother and child care.

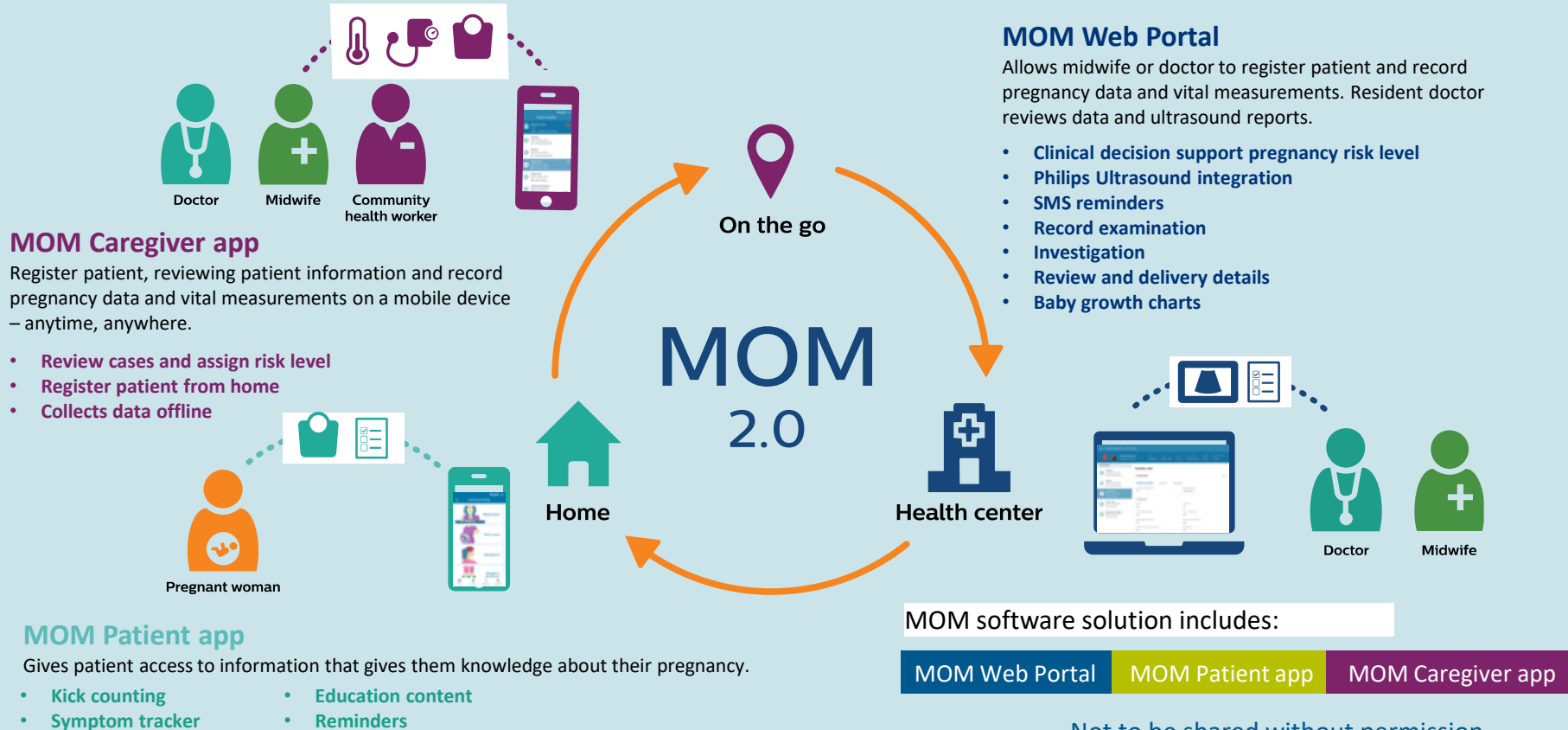


Ineffective referrals, non-existence connectivity and interoperability, and limited funding.

Connecting home to health center



The power of timely information – MOM software solution



Not to be shared without permission

COVID-19 Initiatives for Primary Care



Basics

Transducer selection:

Phased array or curvilinear

- Low frequency
- Deeper penetration

Linear

- Higher frequency / higher resolution
- Best for examining the pleura

When scanning:

- Use a "Lung" preset
- Follow a scanning protocol
- Label and save images
- Transducer marker towards the patients head
- Transducer should be perpendicular to the ribs/pleura
- Images should include two adjacent ribs

Evaluate for lung sliding, lung artifacts (A-lines and B lines), pneumothorax, pleural effusion, interstitial syndrome, and consolidations.



Backpack for Covid-19 screening and management

Touchless (tele-)Monitoring at Home or in remote locations

Goal

- Regular contactless triage of a person at home or in remote locations, for early detection of deterioration
- Video consultancy with a call center in case of emergency, planning/prioritization of primary care or ED visit, to avoid hospital overcrowding
- Early discharge of patients from a hospital earlier, by providing monitoring and video consultancy at home

Functionality

- Regular spot-check of pulse, respiration,
- COVID-19 screening questionnaire to fill in by a patient at home, or a clinician in a remote location
- Emergency video communication with a doctor

Deployment scenarios

- Stand alone iOS, Android app on a device of a patient
- Extension of Lumify proposition with Vital Signs Camera SW and connection to Phoenix platform
- Licensing to video consultancy or telehealth providers (e.g. Apollo)
- Possible integration into CareSage, or VitalHealth solutions

Maturity, current status

- Philips real-time SW for spot-check of PR, RR, validated in ED hospital settings
- iOS, Android SW for PR, RR licensed to InTouch Health
- A demo Vital Signs Camera app for iOS will be released in May, designed at PIC Bangalore

R&D steps toward a market introduction

- Re-factoring of existing SW according to medical SW ICD
- Design of a dedicated iOS or Android app
- ...or System integration of SW for PR, RR, video consultancy, into existing telehealth app or into a Lumify mobile system
- Optional: Connection to MOM/Phoenix platform
- Validation of the complete SW product



Supported by digital solutions:

- Remote access – prevention & management
- Fast, automated, safe and affordable triaging/screening
- High speed of adoption of SW solutions

Not to be shared without permission



Philips
Foundation

SUSTAINABLE
DEVELOPMENT
GOALS



Digital Connected Care Coalition: partnering on digital healthcare solutions for underserved

Unique positioning uniting public and private sectors

- The Digital Connected Care Coalition will bring together and be a knowledge broker between financiers, private sector, public sector, academia, civil society and governments
- It will become an action platform to scale proven pilots and build business & investment cases relevant across public and private sector

